



Amelia
Pull with
short sleeves

S10988





S10988

V.1/KD/MD

Amelia

Pull with short sleeves

Design: Dorothea Neumann



Knit



Intermediate



Recommended Yarn

SIZE	S	M	L
	36/38	40/42	44/46
Back and front			
Width at the bottom	43	47	51
Length to beginning of the raglan	34	34	34
Height raglan edge	13	15	17
Width raglan edge	10	11,5	13
Neck width	23	24	25
Total length	47	49	51
Sleeves			
Width at the bottom	30	33	36
Length to beginning of the raglan	6	6	6
Height raglan edge	13	15	17
Width raglan edge	10	11,5	13
Width at the top	10	11	12
Total length	19	21	23

Measurements are in cm

MATERIALS

Schachenmayr Soft & Easy Fine, 100 g ball

Approx. 100 g ≈ 297 m

Col. 00066 (türkis) 3 3 4 balls

Yarn amounts are approximate. Make sure to purchase enough of the same dye lot in order to complete your project. The color names refer to the German names on the sleeves. The amount of yarn needed approx. vary from person to person

Size circ. needle 3,5 mm (US size 4), 80 cm long

1 croch. hook 3,5 mm (US size 10-9)

1 tapestry needle for weaving in ends

GAUGE

In basic pattern, using needle size 3,5 mm:

23 st and 32 rows = 10 x 10 cm

Adjust your needle size if necessary to obtain the correct gauge.

THE BASICS

Basic pattern:

Work according to the chart in Rows. Read RS rows from right to left, in WS rows purl the st, work kfb (knit from back of stitch) in the yarnover. Begin with the 2 st before the pattern repeat, then work the pattern repeat (= 8 st), end with the 2 st after the pattern repeat.

Repeat R 1 to 16 throughout.

Visible decreases:

Right-hand edge: selvage st, k2tog.

Left-hand edge: skp, selvage st.

skp: slip 1, k1, pass slipped stitch over.

INSTRUCTIONS

Instructions are for smallest size, with changes for larger sizes noted in different colors. When only one figure is given, it applies to all sizes.

Back

Cast on 100/108/116 st and purl the first WS row.

Continue in basic pattern, work the pattern repeat 12x/13x/14x each row.

When the piece measures 34 cm, for the armhole shaping, bind off at each edge 3 st, then work at each edge visible decreases every other R 20x/23x/26x = 54/56/58 st.

In the next RS row bind off the remaining 54/56/58 st.

Total length 47/49/51 cm

Front

Work as for the back.

Sleeves

Cast on 68/76/84 st and purl the first WS row.

Continue in basic pattern, work the pattern repeat 8x/9x/10x each row.

When the piece measures 34 cm, for the armhole shaping, bind off at each edge 3 st, then work at each edge visible decreases every other R 20x/ 23x/26x = 22/24/26 st.

When the piece measures 19/21/23 cm from the cast-on edge, bind off the remaining 22/24/26 st.



FINISHING

Dampen and block the piece according the measurements; allow to dry.

Sew raglan seams, side seams and sleeve seams.

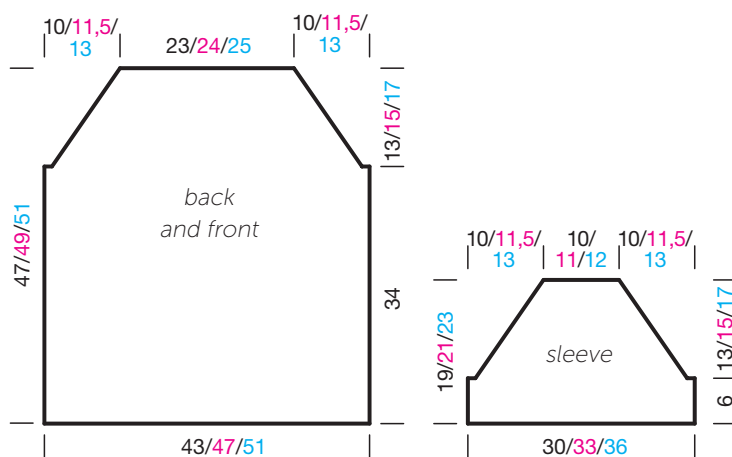
Using the croch. hook, work at the bottom of the top and at the neck edge 1 Rd of slip stitches.

Weave in alle ends.

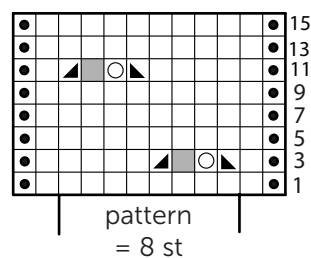
ABBREVIATIONS:

k	= knit
p	= purl
RS	= right side
st(s)	= stitch(es)
tog	= together
WS	= wrong side

Schematic (measurements are in cm)



Chart



Key

- ◼ = 1 selvage st
- ◻ = k1
- ◻ = yarnover
- ◼ = k2tog
- ◼ = skp
- ◼ = no stitch, skip in the chart